

# R.P. LUMBER

BEST SERVICE. BEST VALUE.

July 1 - 31, 2026

**OVER 100 LOCATIONS  
TO SERVE YOU**

To find your nearest R.P. Lumber, visit  
[rplumber.com/locations](http://rplumber.com/locations) Or Scan QR!



Product Pricing and Availability May Vary By Location.

## Storm's Coming. Better Replace That Roof.



**SCAN QR CODE OR CALL**

for current pricing. Product availability & prices are subject to change based on current market conditions. Each shingle product price will vary depending on choice of Cash & Carry or Curbside Delivery.

### ROOFING SHINGLES Our Featured Brands:

**CertainTeed**  
SAINT-GOBAIN

**Landmark Architectural**

- NailTrack Nailing Lines
- StreakFighter Technology
- Limited Lifetime Warranty



**TruDefinition® Architectural**

- SureNail Technology
- Limited Lifetime Warranty
- StreakGuard Algae Protection

## PREMIUM GRADE LUMBER FOR PREMIUM DECKS.



Scan Code For  
Current Pricing.

**LESS CROWN.  
FEWER KNOTS.**



**SPECIAL PRICE  
\$29<sup>99</sup>/sheet  
This Month  
Only!**

**T1-11 Siding  
Yellow Pine  
4' x 8' x 5/8"  
8" On Center**

**MyR.P. MEMBERS  
2X POINTS**



Items marked with  
this symbol qualify for  
2X My R.P. points!

**NOT A MEMBER?**

Join for **FREE** the next time  
you visit one of our stores!

**EVERYDAY  
LOW PRICE**

**32<sup>00</sup>**

Ariat Flag Cap  
a300086103



ARIAT



**SAVE \$4**

USA Flag, 5' x 3' Polycotton,  
Brass Grommets  
6234736  
REG. 10.99

**6<sup>99</sup>**



**VALLEY FORGE**

*The Greatest Name On Flags*

**EVERYDAY  
LOW PRICE**

**2<sup>79</sup>  
ea.**

8" X 12"  
USA Stick Flag  
8147100



**VALLEY FORGE**

*The Greatest Name On Flags*



**SAVE UP TO \$3**



**ipg**

**PRO-MASK BLUE<sup>®</sup>**

**BLOC-IT<sup>™</sup>**

CLEAN LINE TECHNOLOGY

Your Choice

**6<sup>99</sup>**

IPG Blue Masking Tape, 60' 1.88" Wide  
4110789 REG. 9.99

1.41" Wide  
6939557 REG. 8.99

**RUST-OLEUM<sup>®</sup>**

**SAVE \$5**

**11<sup>44</sup>**

Perfect for  
Masonry, Metal,  
Wood, & Unglazed  
Ceramics



Painter's Touch  
Acrylic Latex Paint, 1 Qt.  
Assorted colors and finishes.  
REG. 16.44

**25% OFF**

**ALL IN-STOCK**

**DIABLO<sup>®</sup>**

**SANDING SPONGES**



REG. 2.99 - 9.99

**SAVE \$4**

**7<sup>99</sup>**

**DAP<sup>®</sup>**

DryDex<sup>®</sup>  
Spackling  
6004972  
REG. 11.99



GOES ON PINK  
**DRY TIME INDICATOR**  
DRIES WHITE

**MAXX AIR<sup>®</sup>**



Tilts  
up to  
**180°!**

**SAVE \$40**

**159<sup>99</sup>**

24" Two-Speed  
Tilting Barrel Fan,  
(yellow)  
Includes non-skid  
positioning legs,  
snap-on roll around  
wheels, and built-in  
handle. 1232719  
REG. 199.99

Also available  
in red. Color  
may vary by  
location.

**WOOSTER<sup>®</sup>**

**9<sup>99</sup>**

Fabric Roller  
Cover, 18" W  
7614258  
REG. 14.99

**YOUR CHOICE**

**SAVE \$5**

**13<sup>99</sup>**

Alpha Paint Brush,  
Firm, 2-1/2" W  
5828280  
REG. 18.99

**7<sup>99</sup>**

Painter's Comb,  
Stainless Steel,  
10 Pins  
9099912  
REG. 12.99



**SAVE \$2**

**11<sup>99</sup>**

10" x 12"  
Painter's Rags,  
Cellulose Fiber,  
White, 1-Ply  
6714356  
REG. 13.99

**Scott**

**RAGS**  
IN A BOX<sup>®</sup>

All-Purpose

- Performs like a cloth!
- Strong & durable
- Use for wet or dry cleaning applications
- Pop-up box with built-in handle
- Perfect for painting, polishing, detailing, staining, refinishing furniture, and general cleanups!

**KILZ<sup>®</sup>**

**SAVE \$3**

**6<sup>99</sup>**

UPSHOT<sup>®</sup> Interior  
Primer Stain Sealer  
7456908  
REG. 9.99

**KILZ**  
**UPSHOT**  
INTERIOR PRIMER  
OVERHEAD STAIN SEALER

Perfect for  
Brick, Drywall,  
Metal, Wallpaper,  
Wood and  
more!



**COSCO<sup>®</sup>**

**SAVE \$23**

**59<sup>99</sup>**

Folding Step  
Stool, Steel  
6840771  
REG. 82.99



**HYDE<sup>®</sup>**

**SAVE \$5**

**9<sup>99</sup>**

4-Edge  
Pull Scraper,  
1-1/2" W  
6565444  
REG. 14.99



**SAVE \$5**

**14<sup>99</sup>**

Drop Cloth, 4' X 15'  
Heavyweight Canvas  
2529006  
REG. 19.99

**SUPERTUFF**  
CANVAS ROLLER  
TAPIS DE PROTECTEUR EN CANEVAS  
ROULETTE DE LONA

MACHINE WASHABLE

**TRIMACO**



**MOEN®**  
**25% OFF!**  
SELECT FAUCETS

**SAVE \$32**

**97<sup>99</sup>**

Lindley Series Kitchen  
Faucet w/ Sprayer  
1191899  
REG. 129.99



**SAVE \$50**

**149<sup>99</sup>**

Banbury Series  
Tub and Shower  
Faucet  
6853816  
REG. 199.99



**SAVE \$25**

**74<sup>99</sup>**

Gibson Series  
Bathroom Faucet,  
2-Handle  
7123540  
REG. 99.99



**10% OFF**  
ALL IN-STOCK KINDRED  
SINK BOWLS

REG. 92.99 - 269.99

**KINDRED**



**Fluidmaster.**

**SAVE \$4**

**11<sup>99</sup>**

PerforMAX®  
400H Valve  
2444206  
REG. 15.99

Easy  
To  
Install!

Fix Noisy,  
Slow-Filling  
Toilets!



**SAVE \$18**

**44<sup>99</sup>**

Basket Strainer  
w/ Fixed Post,  
Venetian  
Bronze  
2942472  
REG. 62.99

**K**  
KEENEY



**Vacmaster®**

**SAVE \$13**

**54<sup>99</sup>**

5 Gal.  
Wet/Dry Vac  
4505350  
REG. 67.99



Includes floor brush/squeegee  
nozzle, extension wands, noise  
diffuser & reusable foam filter!



**POWERZONE**

EVERYDAY  
LOW PRICE

**97<sup>99</sup>**

Generator Transfer  
Switch Cord, 25 Ft.  
5990692



My R.P.  
**2X**  
POINTS



**SQUARE D™**  
by Schneider Electric

**SAVE \$30**

**369<sup>99</sup>**

200 AMP, 30 Circuit  
QO Breaker Box  
6559470 REG. 399.99



**SAVE \$7**

**32<sup>99</sup>**

50 AMP,  
2-Pole  
QO Circuit  
Breaker  
6474381  
REG. 39.99



**SAVE \$3**

**13<sup>99</sup>**

20 AMP  
Single Pole  
QO Circuit  
Breaker  
6473250  
REG. 16.99



**POWERZONE**

**SAVE \$40**

**129<sup>99</sup>**

Extra Heavy Duty  
All-Weather  
Extension  
Cord, 100 Ft.  
7755804  
REG. 169.99



**GB**  
Gardner  
Bender

**SAVE \$4**

**8<sup>99</sup>**

Fault Receptacle  
Tester and Circuit  
Analyzer  
Tests standard  
outlets, GFCI outlets  
& extension cords.  
1738475  
REG. 12.99



**SAVE \$8**

**44<sup>99</sup>**

White Bath Exhaust Fan  
w/ Fluorescent Lamp  
2607687 REG. 52.99

**RinKing**  
Ventilation Products



## HOUSE WRAP

<b>PROLinx</b> BUILDING WRAP Select	DuPont™ <b>Tyvek</b>
10' X 150' ROLL <b>99<sup>99</sup></b> 10150PL	10' X 150' ROLL <b>299<sup>99</sup></b> 10150T
9' x 150' ROLL <b>84<sup>99</sup></b> 9150PL	9' X 150' ROLL <b>259<sup>99</sup></b> 9150T

Brands, prices, and availability may vary by location.

## LEAK STOPPER

**SAVE \$5**  
**17<sup>99</sup>**

Rubberized Roof Patch, Black, 1 Gal.  
2537769  
REG. 22.99



## ENGINEERED BUILDING PRODUCTS

<b>GARAGE DOOR HEADERS</b>	<b>LVL</b>
• 3-1/2" X 11-7/8" X 10'	• 1-3/4 X 11-7/8" X 16'
• 3-1/2" X 11-7/8" X 16' 9"	• 1-3/4 X 11-7/8" X 20'
• 1-7/8" I-JOISTS	• 1-3/4 X 11-7/8" X 24'
• LPI 20 PLUS SERIES	• 1-3/4 X 11-7/8" X 28'
	• 1-3/4 X 11-7/8" X 32'



Please call for pricing at our Custer, Rawlins, & Saratoga stores.

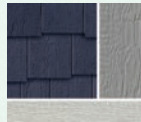
SCAN FOR PRICING



## Siding, Shake, and Trim

### Level Up The Neighborhood Standard

- Limitless Customization • Superior Durability
- Architectural Craftsmanship
- 33 Colors & Styles To Choose From!



**EVERYDAY LOW PRICE**

**8<sup>69</sup>** ea.

DynaFlex Ultra Exterior Sealant, Clear or White, 10.1 Oz.  
1134980, 1134972

**EVERYDAY LOW PRICE**

**10<sup>99</sup>** ea.

AMP All-Weather, Clear or White, 9 Oz.  
1135177, 1135169

**DAP**

**My R.P. 2X POINTS**



## 6' x 6' - 8" Manchester Sliding Patio Door

White/White starting at **1,329<sup>99</sup>**

Black/White starting at **1,539<sup>99</sup>**

Black/Black starting at **1,829<sup>99</sup>**



**MANCHESTER Series**  
By Quaker

## ENTRY DOORS



Proud Retailer of:



Proud Retailer of **Rollex**  
ALWAYS ON THE JOB

**Black Jack**

**SAVE \$10**

**69<sup>99</sup>**

Elasto-Kool Elastomeric Roof Coating, White, 4.75 Gal.  
1403799  
REG. 79.99



Product availability & prices are subject to change based on current market conditions.



SCAN OR CALL FOR CURRENT SHEET GOODS PRICING.

SPECIALTY PLYWOOD 4' x 8' SHEET		THICKNESS	
OAK		1/4"	1/2" 3/4"
BIRCH		1/4"	1/2" 3/4"
MARINE		N/A	1/2" 3/4"
OSB SHEATHING 4' x 8' SHEET - SQUARE EDGE		CDX PLYWOOD 4' x 8' SHEET - SQUARE EDGE	
1/4"	5/8"	1/2" (4 ply)	5/8"
7/16"	3/4"	3/8"	3/4"
1/2"	3/4" (T&G)		
PRE-CUT			
2" x 4" x 92 - 5/8"	2" x 6" x 92 - 5/8"	1 x #2 WHITE PINE	
2" x 4" x 104 - 5/8"	2" x 6" x 104 - 5/8"	1" x 4" - 8'/10'/12'/16'	
		1" x 6" - 8'/10'/12'/16'	
		1" x 8" - 8'/10'/12'/16'	
		1" x 12" - 8'/10'/12'/16'	

## DRYWALL

LIGHTWEIGHT

4' x 8' x 1/2" | 4' x 12' x 1/2"

LIGHTWEIGHT FIRECODE

4' x 8' x 5/8" | 4' x 12' x 5/8"



SCAN FOR PRICING



## ENTRY DOORS

Starting At

**366<sup>49</sup>**

PRO SERIES  
VV 6-PANEL  
STEEL ENTRY DOOR

2' 8" and 3' 0"  
Left Or Right-Hung  
Single Or Double Bore  
4' 9/16" Jamb With  
Brick Molding  
Adjustable Sill



FEATURING



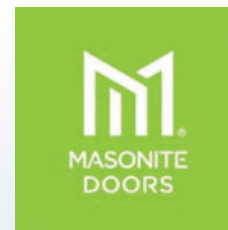
The Natural Solution for Rot-free Door Systems  
DURA-FRAME is Alaskan Yellow Cypress, one of the planet's most durable woods, naturally resistant to rot and insect attack.

## INSULATION

Proud Retailer of



## INTERIOR PREHUNG DOORS



Multiple widths & styles available.

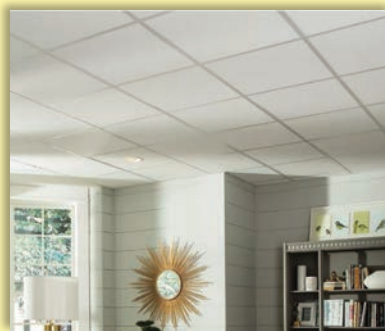
Primed  
& Ready  
To Paint!



Contact your local R.P. Lumber for pricing.  
Special Order Only.

## CEILING TILE & HARDWARE

2' X 2' 22RT RANDOM TEXTURE LAY-IN TILE	6 <sup>79</sup> EA
2' X 4' 24RT RANDOM TEXTURE LAY-IN TILE	8 <sup>49</sup> EA
2' X 4' 24TX TEXTURE LAY-IN TILE	8 <sup>49</sup> EA
2' X 2' 22SA SAHARA LAY-IN TILE	9 <sup>79</sup> EA
2' WHITE CROSS TEE 2FGTW	3 <sup>89</sup> EA
4' FIRE GUARD WHITE TEE 4FGTW	7 <sup>49</sup> EA
12' WHITE WALL ANGLE 12WAW	12 <sup>99</sup> EA
12' WHITE MAIN RUNNER 12FGMRW	18 <sup>99</sup> EA



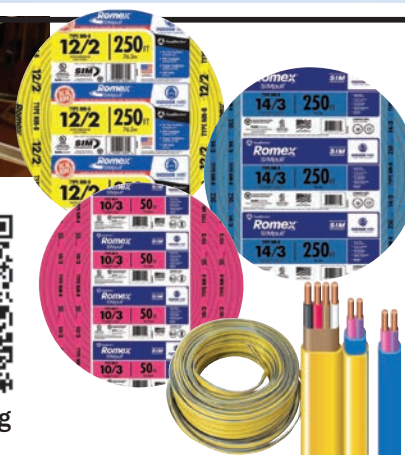
Proud Retailer of



Indoor Wire Copper NM-B Cable



Scan For Pricing



**SAVE \$80**

**299<sup>99</sup>**

12" Single-Bevel Compound Miter Saw  
Includes 12" Carbide-Tipped Blade, Dust Bag, & Vertical Clamp Wrench  
8005852  
REG. 379.99



**DEWALT**

Corded Tool

**Milwaukee**

**SAVE \$9**

**15<sup>99</sup>**

Diagonal Cutting Pliers, 7"  
REG. 24.99  
1384924



**Milwaukee**

**SAVE \$50**

**299<sup>99</sup>**

M18™ Fuel™ Narrow Crown Stapler  
9670431  
REG. 349.99



**Milwaukee**

**SAVE \$5**

**24<sup>99</sup>**

Tape Measure, Wide Blade, 25 Ft.  
1384569  
REG. 29.99



**Milwaukee**

**SAVE \$10**

**29<sup>99</sup>**

Framing Hammer, 22 Oz., Smooth Face  
1385210  
REG. 39.99



**Milwaukee**

**SAVE \$40**

**79<sup>99</sup>**

SHOCKWAVE PACKOUT Impact Driver Bit Set  
1388743  
REG. 119.99

**100  
PIECE**

**HOT  
BUY**



We've Levelled Up Our Power Tool Accessory Game!

**DIABLO**

**Huge NEW Selection!**

**CUT | GRIND | DRILL | SAND**



**SAVE \$50**

**199<sup>99</sup>**

M18 FUEL™ Oscillating Multi-Tool  
(Battery Sold Separately)  
2836-20  
REG. 249.99



**SAVE \$70**

**99<sup>99</sup>**

M18™ REDLITHIUM™ XC5.0  
1300656  
REG. 169.99

**HOT  
BUY**



**Milwaukee**

**SAVE \$30**

**119<sup>99</sup>**

Contractor Work Belt  
1385509 REG. 149.99



**HOMECREST**  
CABINETS  
PRICING AS SHOWN:  
**\$5,966<sup>49</sup>** before tax  
Cabinets Shown in:  
• Door Style: Arbor  
• Finish: French Vanilla



**FREE!**

- ✓ CONSULTATION
- ✓ MEASUREMENTS
- ✓ DIGITAL DESIGN

**Amerock**  
HARDWARE  
Monument Series  
Cabinet Pulls  
0473207



6.99/EA (x23)= **160<sup>77</sup>**

**FORMICA**  
COUNTERTOPS  
PRICING AS SHOWN:  
**\$829<sup>33</sup>**  
Laminate Butcher Block  
Color: Planked Walnut



**MOEN**  
FAUCET  
Adler Series  
Pull-Down  
Kitchen Faucet  
7440696  
**199<sup>99</sup>**



**KINDRED**  
SINK  
Two-Bowl  
Stainless  
Steel Kitchen  
Sink  
7398563  
**179<sup>99</sup>**



**KITCHEN DESIGN  
PRICING AS SHOWN:  
\$6,507<sup>24\*</sup>**  
\*Excludes flooring, appliances, accessories,  
tax, delivery, and installation.

**EXPERIENCED,  
PROFESSIONAL  
DESIGNERS  
ON STAFF!**



**SAVE \$20**  
**47<sup>99</sup>**  
Smoke and Carbon  
Monoxide Alarm with  
Slim Profile Design  
8495087  
REG. 67.99



**FIRST ALERT**

**SAVE \$10**  
**17<sup>99</sup>**  
Rechargeable Fire  
Extinguisher, 2.5 lb,  
Types A, B, & C  
3265550  
REG. 27.99



Effective  
Against:  
paper, wood,  
textiles, &  
plastics!

Also works  
on liquid &  
electrical  
fires!

**SAVE \$40**  
**139<sup>99</sup>**  
Range Hood, Ducted,  
30" Wide  
5421649  
REG. 179.99



**Ain-King**  
Ventilation Products

**BOSTON HARBOR**

**SAVE \$20**  
**44<sup>99</sup>**  
Flush-Mount LED  
Ceiling Fixture,  
Brushed Nickel, 12"  
7146053  
REG. 64.99



**Plumb Pak**

**SAVE \$5**  
**24<sup>99</sup>**  
Soap/Lotion Dispenser,  
10 Oz. Capacity,  
Polished Chrome  
1062280  
REG. 29.99



**Swiffer WETJET**

**EVERYDAY  
LOW PRICE**  
**25<sup>99</sup>**  
WetJet Starter Kit  
Includes: Sweeper,  
cleaning solution,  
3 cleaning pads &  
4 scrubbing strips.  
0922724



**My R.P. 2X POINTS**

**SAVE \$1**  
**5<sup>99</sup>**  
WetJet Floor Cleaner, 42.2 Oz.  
8121733 REG. 6.99



**SAVE \$2**  
**9<sup>99</sup>**  
WetJet Mop  
Pad Refills  
7969199  
REG. 11.99



**DAWN**  
America's #1  
Dish Soap!

**EVERYDAY  
LOW PRICE**  
**3<sup>79</sup>**  
Liquid  
Dishwashing  
Detergent, 18 Oz.  
0438622



**My R.P. 2X POINTS**

**Scotch-Brite**

**SAVE \$2**  
**3<sup>99</sup>**  
Soap Dispensing  
Brush, 4"  
2059053  
REG. 5.99



**simple green**

**SAVE \$1**  
**4<sup>99</sup>**  
All-Purpose Cleaner,  
24 Oz., Liquid  
Concentrate  
6982045  
REG. 5.99



**30% OFF**  
**ALL IN-STOCK PROSOURCE  
FURNITURE MOVERS &  
FLOOR PROTECTION**  
REG. 2.59 - 44.99

**ProSource**



July 1 - 31, 2026

Product Pricing and Availability May Vary By Location.

**OUTDOOR LIVING**

# DECK UPGRADE? LET'S GET BUILDING.

## ENHANCED NATURALS



**12' BOARDS**  
ALSO AVAILABLE  
IN 16' AND 20'  
BOARDS

Scan QR Code  
For Current  
Pricing



## SANCTUARY



**12' BOARDS**  
ALSO AVAILABLE  
IN 16' AND 20'  
BOARDS

Scan QR Code  
For Current  
Pricing



## VINTAGE COLLECTION



**12' BOARDS**  
ALSO AVAILABLE  
IN 16' AND 20'  
BOARDS

Scan QR Code  
For Current  
Pricing



ASK ABOUT:

**JOBSITE DELIVERY**



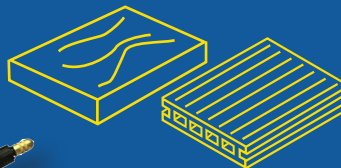
ASK ABOUT:

**FREE BLUEPRINT TAKEOFFS**



ASK ABOUT:

**TREATED LUMBER VS. COMPOSITE MATERIAL**



EXTERIOR WOOD STAIN

**Stain & Sealer Gallons**

**SAVE \$10**

Your Choice

**34<sup>99</sup>**

REG. 44.99

Available in:

- Redwood
- Natural Cedar
- Light Oak
- Clear
- Golden Pine
- Mission Brown
- Burnt Hickory
- Mahogany
- Dark Walnut
- Pecan



**CHAPIN**  
COVER MORE GROUND

**SAVE \$10**  
**49<sup>99</sup>**

2 Gal. ProSeries XP  
Compression Sprayer  
4186649 REG. 59.99

**3 NOZZLES INCLUDED**

- Brass Adjustable Cone
- Poly Adjustable Cone
- Poly Fan

**Roundup**  
26<sup>99</sup>

Weed and Grass Killer  
Concentrate,  
35.2 Oz.  
2810315  
REG. 31.99

Makes Up To 11.7 oz.!

Rainproof in 30 min!

Visible Results in 12 hr!

**HUSKY**  
**SAVE \$5**  
**16<sup>99</sup>**

Drawstring Yard Bags,  
Clear, 39 gal, 70 ct.  
7638778  
REG. 21.99



**SAVE \$60**  
**119<sup>99</sup>**

Wheelbarrow, 6 cu-ft. Steel Tray,  
2-Wheel, Pneumatic  
4540241  
REG. 179.99



**SAVE \$16**  
**19<sup>99</sup>**

**HOT BUY**

Steel Bow Rake,  
16-Tine, 17"  
2668267  
REG. 35.99



**Patch Up Those Potholes!**  
Open. Pour. Drive.

**EVERYDAY LOW PRICE**

**21<sup>99</sup>**

Perma-Patch,  
50 Lb. Bag  
PP50



**M.R.P.**  
**2X POINTS**

**PERMA-PATCH**  
PERMANENT PAVEMENT REPAIR

**Product availability & prices are subject to change based on current market conditions.**

Prices listed are valid July 1 - 31, 2026 while supplies last. No rain checks. Job site deliveries are subject to equipment charge. Not all products, colors, or varieties are stocked at all locations. Prices are subject to change based on current market conditions. Availability of some items may be limited due to demand, availability, or other circumstances beyond R.P. Lumber's control. R.P. Lumber reserves the right to limit quantities. All advertised prices are subject to change due to printing errors and other unforeseen circumstances at the time of printing.

**SHOP OVER 90,000 PRODUCTS  
AT RPLUMBER.COM**

**BUY ONLINE &  
PICK UP IN STORE**

